

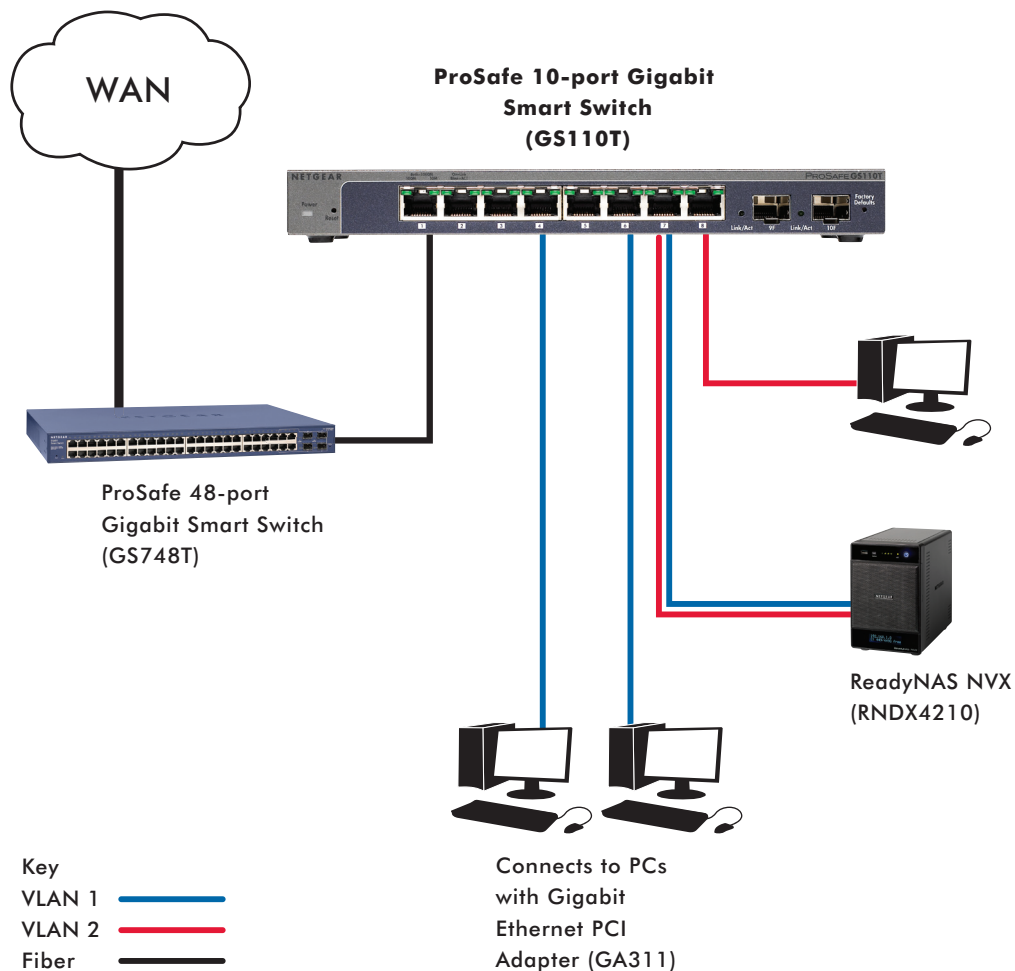
Intelligent switch in a compact form factor for optimized utilization and efficiency



The NETGEAR® family of ProSafe® Gigabit Smart Switches is purposely designed for SMB customers with high performance, SMB-oriented features and easy management. With 8 10/100/1000 Mbps ports, each capable of powering 2000 Mbps of data throughput in full-duplex mode per port and two dedicated Gigabit SFP ports for fiber uplinks with greater distance and better security, the GS110T is an ideal solution for extending network connections into conference room, labs, lobbies and department workgroups. The GS110T comes with a comprehensive set of features, such as access control lists (ACL), 802.1x port authentication, enhanced QoS, rate limiting and IGMP snooping among others to provide a small or medium-sized business with a network that is geared for growth while ensuring performance and reliability.

The GS110T comes with an intuitive, Web-browser interface which offers simple Smart Switch management, making it a snap to monitor switch performance, configure ports, even set up port trunks, VLANs, and traffic prioritization.

GS110T is packed with powerful features capable of enhancing any type of business network. Like all NETGEAR ProSafe Smart Switches, the GS110T is backed by the NETGEAR ProSafe Lifetime Warranty[†], and 1-Year ProSupport Lifetime 24x7 Advanced Technical Support*.



Features	Benefits
Dedicated Fiber Uplink	• Directly connects to FTtx networks. Used in fiber networks for better security and reliability
Traffic Management	• Prioritize traffic to ensure quality of latency-sensitive services and applications despite increasing traffic loads
Advanced Security with 802.1x and ACL	• User-based authentication and added filtering to permit or deny traffic based on MAC or IP addresses
Auto Voice and Auto Video	• Assist customers to easily set up VoIP or IP surveillance networks with a couple of simple steps
Centralized Management via the New Smart Control Center	• Discover all the Smart Switches in the network, configure them from a central location; schedule mass configuration and firmware uploads

Technical Specifications

• Network Protocol and Standards Compatibility

- IEEE 802.3 10BASE-T
- IEEE 802.3u 100BASE-TX
- IEEE 802.3ab 1000BASE-T
- IEEE 802.3z 1000BASE-X
- IEEE 802.3x full-duplex flow control

• Power Supply

- Power consumption: 8.5W
- 12V/1A external power adapter

• Network Ports

- 8 10/100/1000 Mbps auto sensing Gigabit Ethernet
- 2 SFP slots

• Physical Specifications

- Dimensions: (W x D x H):
236 x 101 x 27 mm (9.29 x 3.97 x 1.06 in)
- Weight: 0.69 kg (3.7 lb)

• Electromagnetic Emissions

- CE EN 55022, EN 61000 and EN 55024
- FCC Part 15 Class B
- VCCI Class B
- C-Tick

• Environmental Specifications

- Operating temperature: 32° to 122° F (0° to 50° C)
- Storage temperature: -4° to 158° F (-20° to 70° C)
- Operating humidity: 90% maximum relative humidity, non-condensing
- Storage humidity: 95% maximum relative humidity, non-condensing
- Operating altitude: 10,000 ft (3,000 m) maximum
- Storage altitude: 10,000 ft (3,000 m) maximum

• LEDs

- Per port (10/100 and Gigabit):
Link/activity, speed
- Per device: Power

• Safety

- UL/cUL 60950-1
- CE EN 60950-1
- CCC
- CB
- KCC

• System Requirements

- Category 5 UTP Network cables or above
- Network card for each PC
- Network software (e.g., Windows®)
- Web browser (e.g., Internet Explorer 6.0 or higher, Netscape 6.0 or higher)

• Administrative Switch Management

- IEEE 802.1Q static VLAN (64 groups, static)
- IEEE 802.1p Class of Service (CoS)
- Port-based QoS
- DSCP-based QoS
- DiffServ
- IEEE802.3ad link aggregation (manual or LACP)
- IEEE 802.1D Spanning Tree Protocol (STP)
- IEEE 802.1w Rapid Spanning Tree Protocol (RSTP)
- IEEE 802.1s Multiple Spanning Tree Protocol (MSTP)
- IEEE 802.1ab Link Layer Discovery Protocol (LLDP)
- LLDP-MED
- SNMP v1, v2c, v3
- RFC 1213 MIB II
- RFC 1643 Ethernet interface MIB
- RFC 1493 bridge MIB
- RMON group 1, 2, 3, 9
- RFC 2131 DHCP client
- Voice VLAN
- Auto-VOIP
- DHCP Filtering
- Auto denial-of-service (DoS) protection

- HTTP and HTTPS
 - Ping and traceroute
 - Power saving when link down
 - IEEE 802.1x
 - Port-based security by locked MAC addresses
 - IP and MAC ACL
 - Storm control for broadcast, multicast and unknown unicast packets
 - IGMP snooping v1/v2/v3
 - Protected Port
 - Port-based ingress and egress rate limiting
 - SNTP
 - Port mirroring support (many to one)
 - Web-based configuration
 - Configuration backup/restore
 - Password access control
 - RADIUS Support
 - TACACS+ support
 - Syslog
 - Firmware upgradeable
- ### • Performance Specifications
- Forwarding modes: Store-and-forward
 - Bandwidth: 20 Gbps
 - Network latency: <4μs for 64-byte frames in store-and-forward mode for 1000 Mbps to 1000 Mbps transmission
 - Buffer memory: 512KBytes per system
 - Address database size: 4,000 media access control (MAC) addresses per system
 - Addressing: 48-bit MAC address
 - Mean time between failures (MTBF): 472,147 hours at 25C (~54 years)
 - Acoustic noise: 0

• Modules

- AGM731F 1000BASE-SX SFP Module
- AGM732F 1000BASE-LX SFP Module
- AGM733 1000BASE-ZX SFP Module

• Warranty and Support

- ProSafe Lifetime Warranty†
- ProSupport 24x7 Advanced Technical Support, 1 year (included)*

• ProSupport™ Service Packs Available

- XPressHW, Category 1: PRR0331 (3-year next-business day hardware replacement contract)
- OnCall 24x7, Category 1: PMB0331 (3-year Advanced Technical Support contract, including Remote Diagnostics performed by our technical experts for prompt resolution of technical issues, and next-business day hardware replacement)

• Package Contents

- ProSafe® 8-port Smart Switch with 2 Gigabit SFP Ports (GS110T)
- Rubber footpads
- 12V/1A external power adapter
- Wall-mount kit
- Resource CD
- Installation guide

• Ordering Information

- North America: GS110T-100NAS
- UK: GS110T-100UKS
- Japan: GS110T-100JPS
- Europe: GS110T-100GES
- Australia: GS110T-100AUS

NETGEAR®

350 E. Plumeria Drive
San Jose, CA 95134-1911
1-888-NETGEAR (638-4327)
E-mail: info@NETGEAR.com
www.NETGEAR.com

© 2012 NETGEAR, Inc. NETGEAR, the NETGEAR Logo, Connect with Innovation, ProSafe and ProSupport are trademarks and/or registered trademarks of NETGEAR, Inc. and/or subsidiaries in the United States and/or other countries. Other brand names mentioned herein are for identification purposes only and may be trademarks of their respective holder(s). Information is subject to change without notice. All rights reserved.

* 1-year 24x7 Advanced Technical Support included, including Remote Diagnostics performed by our technical experts for prompt resolution of technical issues.

† Lifetime warranty for product purchased after 05/01/2007. For product purchased before 05/01/2007, warranty is 3 years.